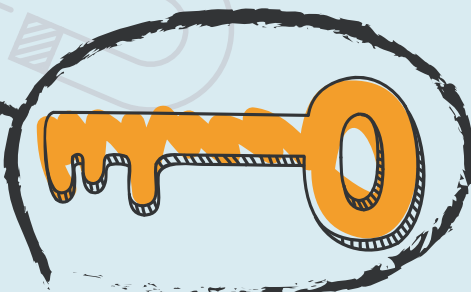
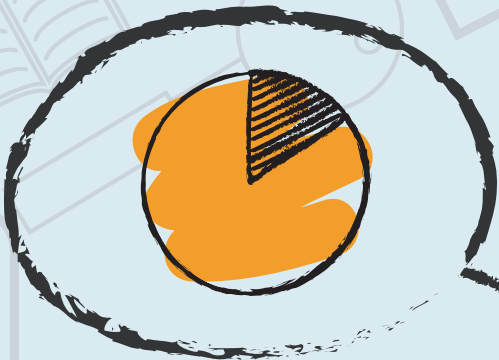
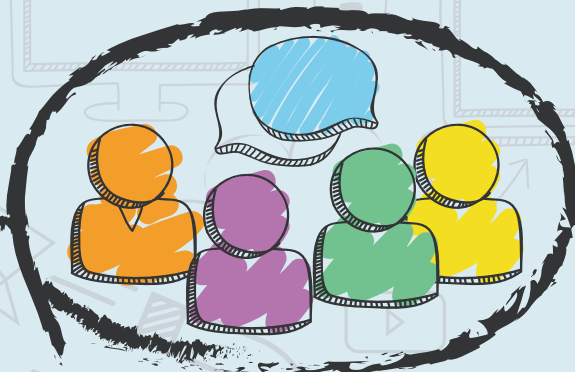
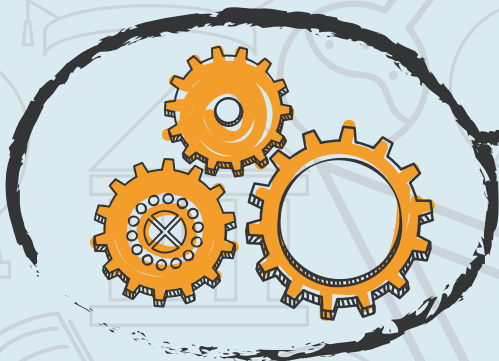
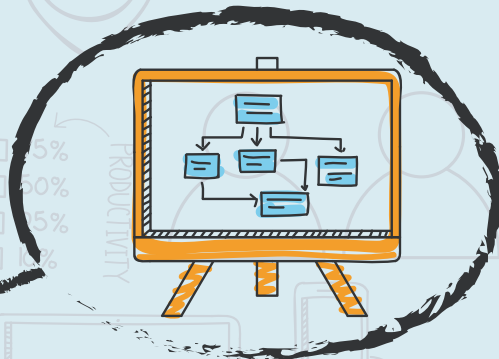
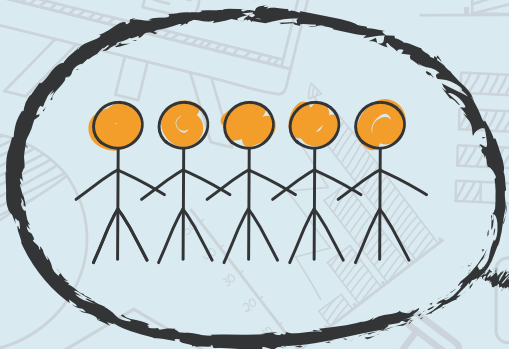


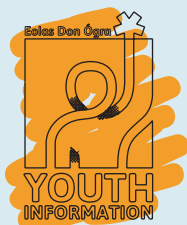
# GOING TO COLLEGE 2024

A GUIDE FOR PARENTS AND STUDENTS



# DECISIONS! DECISIONS!

Making important career decisions can be difficult, it is important to make sure you are well informed and avail of whatever support is there. In the first instance you should consult with your school's Guidance Counsellor and get access to careers information and advice. The YMCA Youth Information Service has produced this publication as a further support, providing practical information and advice for students and their parents on the full range of education and training options available to school leavers, together with details of application procedures and education finance. A companion publication called Options 2024 will be produced at the end of next summer to coincide with Leaving Certificate results.



## YOUTH INFORMATION – ONLINE ASSISTANCE YICHAT (YMCA-IRELAND.NET/QUESTION)

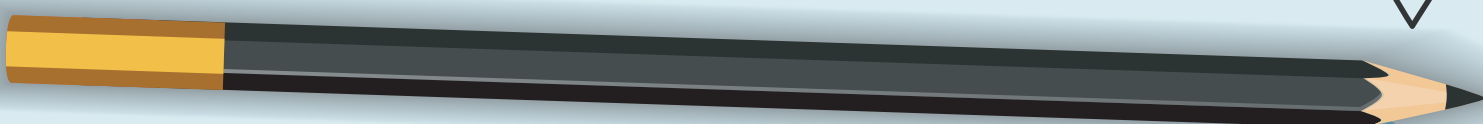


Youth Information Chat is an online chat service operated by YMCA Ireland's Advocacy and Youth Information Service together with Youth Information Centres from Youth Work Ireland, Crosscare and by Ireland's Youth Information website, SpunOut.ie.

The service is staffed by trained Youth Information Officers, who can help young people and parents discuss their situation and talk through their options. YIChat works just like WhatsApp or Facebook Messenger. It helps to provide young people and parents with advice and answers to their questions.

The Youth Information Chat service is also available every Monday to Friday, 16:00 - 20:00 or you can leave a message outside of those hours and receive a reply by email. The service is open to 16 to 25 year olds, parents, and people who work with young people.

Go to  
[ymca-ireland.net/question](https://ymca-ireland.net/question)  
to get started



CAO

## RESEARCHING COURSE OPTIONS

Before considering making an application to the CAO, it is essential to thoroughly research all your course options and not be too restrictive in your choices. In the first instance you should get access to career information and advice through your school Guidance Counsellor.

It is advisable to visit college websites and, where possible, attend college open days. The website [www.qualifax.ie](http://www.qualifax.ie) is another excellent resource, containing information on courses available nationwide. It includes information on course contents, calculating points, basic entry / course requirements and career possibilities. Another searchable course database is the Careers Portal website ([www.careersportal.ie](http://www.careersportal.ie)). These resources also have career interest assessments / preference exercises that will prompt you with a list of courses that may suit your career preferences.

If at this point you are still unsure of your exact career or course choice, you can still submit an application and then, if necessary, use the CAO "change of mind" facility to change your course choices and order of preference. However, check the restrictions on applications in the CAO handbook or on their website.

# BASIC ENTRY REQUIREMENTS

In addition to the leaving certificate points system, each 3rd level institution may have its own basic or minimum entry or matriculation requirements, and some courses may also require particular subjects / grades. For exact requirements check the website of the relevant college.

## IMPORTANT! – NOTE ON CAO DATES

[WWW.CAO.IE](http://WWW.CAO.IE)

As CAO dates are subject to change, make sure to check their website regularly to keep yourself accurately informed of important dates regarding application procedures, offer acceptance deadlines and more

### CAO APPLICATION PROCEDURES

- Each applicant will be offered the highest preference course to which their results may entitle them (if any) under each category: Level 8 or Level 7 / Level 6 etc.
- You must list your course choices in genuine order of preference, always putting the course you would most like to do as your first preference at the top of the list. It is very strongly advised that you fill in all of the available preferences to allow yourself the maximum opportunity to obtain a college course place.
- If you are not successful in obtaining your first choice this will have no effect on your chances of getting a place in one of your lower preferences.
- Additionally, there are several 'Rounds' of offers (i.e. Round 1, 2, 3 etc). You may be offered your first choice or higher preference in one of these later 'Rounds'. This can occur as points may change in subsequent Rounds to fill any remaining or newly available course places.
- Furthermore, if you accept a lower preference offer in one of the initial Rounds, and are then offered one of your higher preferences in a later Round, you can simply accept this new offer and your previous acceptance will be cancelled.
- There are different categories (e.g. Level 8, Level 7, Level 6). You can list up to 10 choices in each category (REMEMBER - You should list your choices in genuine order of preference).
- Listing courses in more than one category is strongly advised. As it means that you can receive more than one offer simultaneously, with the option to accept the one you prefer. This will also keep your options open if things don't go exactly according to plan.

### CAO ONLINE APPLICATION FACILITY

You can apply at [www.cao.ie](http://www.cao.ie) from Monday, 6th November 2023. Applications should be done well in advance and it is recommended to register on the CAO system early to obtain your CAO application number. The normal cost of applying through the CAO is €45. However, a discounted early application rate of €30 applies - see CAO for details of early application deadlines. (NOTE: These amounts may have changed by the time 2023/2024 applications open in November).

## OTHER KEY CAO DATES \*

**\*As dates and fees are subject to change, check [www.cao.ie](http://www.cao.ie) regularly to stay accurately informed**

<b>Normal closing date for applications (€45)</b>	<b>- 1st February (17:00)</b>
<b>Online facility to amend choices (€10)</b>	<b>- Opens 4th February (12:00)</b>
<b>Closing date for amending courses</b>	<b>- 1st March (17:00)</b>
<b>Closing date for HEAR/ DARE applications</b>	<b>- 1st March (17:00)</b>
<b>LATE Application Facility Opens</b>	<b>- 4th March (12:00)</b>
<b>HEAR/ DARE documents closing date</b>	<b>- 15th March (17:00)</b>
<b>Closing Date for LATE Applications</b>	<b>- 1st May (17:00)</b>
<b>Online Change of Mind facility opens (restrictions apply)</b>	<b>- 5th May (12:00)</b>
<b>Change of Mind facility closes.</b>	<b>- 1st July (17:00)</b>

# HEAR AND DARE INFO

**What is HEAR?:** Each year The Higher Education Access Route (HEAR) reserves a number of places for students from socio-economically disadvantaged backgrounds that show an ability to succeed at third level.

**What is DARE?:** The Disability Access Route To Education (DARE) is a college course access scheme for people under 23 years of age that have a disability or diagnosed learning difficulty.

For more information on the **HEAR** and **DARE** Schemes visit [accesscollege.ie](https://www.accesscollege.ie). For DARE and HEAR applicants, the CAO website contains a page specifically dedicated to the DARE / HEAR process, including key dates and much more. Visit [cao.ie](https://www.cao.ie) for details.

## HEAR or DARE Applications

When applying for HEAR, indicate this on your CAO form. For DARE applicants select “modify disability/SLD” status on your CAO form. See the table above for other key CAO dates and important HEAR/DARE application dates. For further information see [accesscollege.ie](https://www.accesscollege.ie) and/or visit the Access Offices in the participating colleges

# AFTER APPLYING

CAO will communicate with applicants via post and email, and in some instances telephone and SMS text message, at various intervals throughout the application process. All CAO correspondence must be read carefully and any errors or omissions notified to CAO immediately via the ‘Contact form’ on the website ([cao.ie](https://www.cao.ie)).

AFTER  
SUBMITTING

## CHANGE OF COURSE CHOICES FACILITY

Subject to certain restrictions, course choices and order of preference can be changed, free of charge, as often as desired, up to 1st March at 5pm. Changes will be acknowledged by a Statement of Course Choices

## LEAVING CERTIFICATE RESULTS and CAO OFFERS

Leaving Certificate results are usually issued in mid August, with CAO first round offers normally made within days. Once again, check the [cao.ie](https://www.cao.ie) for accurate dates and times, closer to August. With regard to offers, should there be a delay in receiving any documentation, contact CAO using the ‘Contact Us’ facility on the website.

# COLLEGE OPEN DAYS 2023/2024

Some HEI’s may have already had their open day. If the institution you are interested in is not listed below, see the relevant HEI website / prospectus for more details on courses, facilities etc.

## HEI OPEN DAY DATE & TIME

University of Galway	October 6th & 7th, 2023, 9AM
UCC	October 14th, 2023, 10AM
MIC Limerick	October 19th & 20th, 2023, 9AM
University of Limerick	October 19th & 20th, 2023, 9AM
TUS Athlone	October 20th & 21st, 2023, 10AM
ATU Galway City	October 24th, 2023, 10AM
SETU (Carlow Campus)	October 26th, 2023, 12PM
Trinity College Dublin	November 4th, 2023, 10AM
ATU Letterkenny	November 9th, 2023, 9:30AM
SETU (Waterford Campus)	November 10th, 2023, 10AM
ATU Connemara	November 10th, 2023, 11AM

\*NOTE: ‘FET College’ denotes a college of **Further Education & Training**. These colleges provide Level 5 and Level 6 courses which can act as an alternative gateway to Third Level Institutions (i.e., Level 7 and Level 8 Undergraduate Degree Courses in Universities etc.)

## OTHER HEI OPEN DAYS

For information on all other college open days and other information events you can visit [careersportal.ie](https://www.careersportal.ie) and check the ‘Events Calendar’.

<b>HEI</b>	<b>OPEN DAY DATE &amp; TIME</b>
TU Dublin (Blanchardstown)	November 10th, 2023, 10AM
MIC Limerick	November 11th, 2023, 10AM
UCD	November 11th, 2023, 10AM
TUS Thurles	November 12th, 2023, 11AM
Dundalk Institute of Technology	November 15th, 2023, 4PM
SETU (Carlow Campus)	November 17th, 2023, 10AM
ATU Sligo (St. Angela's)	November 17th & 18th, 2023, 12PM/10AM
MTU (Crawford Art & Design, Cork City)	November 17th, 2023, 9AM
MTU (Bishopstown Campus, Cork City)	November 17th, 2023, 9AM
DCU	November 17th & 18th, 2023, 10AM
ATU Sligo	November 17th & 18th, 2023, 10AM/12PM
TU Dublin (Tallaght)	November 17th, 2023, 10AM
NCAD (Art & Design)	November 21st, 2023, 9AM
Colaiste Dhulaigh, Dublin (FET College*)	November 23rd, 2023, 12PM
Maynooth University	November 24th & 25th, 2023, 10AM
IADT Dun Laoghaire (Art, Design & Tech)	November 25th, 2023, 9AM
ATU (Dublin Rd Campus, Galway)	November 25th, 2023, 10AM
TU Grangegorman	December 2nd, 2023, 10AM
BFEI (Blackrock, Dublin) (FET College*)	January 17th, 2024, 10AM
ATU Sligo / St. Angela's	January 18th, 2024, 6PM
MIC Limerick	January 18th, 2024, 10AM
ATU Letterkenny	January 24th, 2024, 4PM
ATU Galway City	January 25th, 2024, 6PM
ATU Letterkenny Campus	March 2nd, 2024, 10AM
ATU Mountbellew Campus	March 6th, 2024, 10AM
IADT Dun Laoghaire (Art, Design & Tech)	March 9th, 2024, 9AM
ATU Mayo Campus	March 13th, 2024, 10AM
ATU Mayo Connemara Campus	March 23rd, 2024, 11AM
MTU Kerry Campus	April 13th, 2024, 9AM
MIC Thurles	April 13th, 2024, 9AM
ATU Galway / Mayo	April 13th, 2024, 10AM
TU Bolton Street	April 13th, 2024, 10AM
TU Grangegorman	April 13th, 2024, 10AM
Dundalk Institute of Technology	April 17th, 2024, 4PM
TU Blanchardstown	April 18th, 2024, 5:30PM
TU Aungier Street	April 20th, 2024, 10AM
ATU Sligo / St Angela's Campus	April 20th, 2024, 10AM
ATU Mountbellew Campus	April 27th, 2024, 10AM
ATU Donegal Campus	May 2nd, 2024, 4PM
SETU (Carlow Campus)	May 11th, 2024, 12PM

# CAO POINTS SYSTEM

Higher level grade Points	H1	H2	H3	H4	H5	H6	H7	H8				
	100	88	77	66	56	46	37	0				
Lower level grade Points					O1	O2	O3	O4	O5	O6	O7	O8
					56	46	37	28	20	12	0	0

## MATHS BONUS POINTS

In Higher Level Maths, for H6 grades and above, 25 additional bonus points will be awarded to the 46 points already awarded for a H6 grade.

## LEAVING CERTIFICATE VOCATIONAL PROGRAMME GRADES

Distinction: 66 points / Merit: 46 points / Pass: 28 points

**IMPORTANT: All HEIs award points for results in Leaving Certificate Vocational Programme Link Modules, in place of a sixth Leaving Certificate subject. However, not all HEIs count LCVP as meeting eligibility requirements in regard to passing subjects. Applicants should refer to HEI literature for full details.**

## FOUNDATION LEVEL GRADES

F1: 20 points / F2: 12 points

# CAO POINTS CALCULATOR

A Points Calculator is available on the CAO website at [www.cao.ie](http://www.cao.ie)

## CONDITIONS REGARDING POINTS

- The 6 best results, in recognised subjects, in one Leaving Certificate Examination will be counted for points computation.
- One sitting only of the Leaving Certificate Examination will be counted for points purposes.
- For certain subjects, e.g. Foundation Level Maths or Foundation Level Irish, some HEIs may not award the points shown above. If in doubt, check with the Admissions Office of the appropriate HEIs.
- You must first meet the minimum entry requirements in order to be considered for entry to a course. The bonus points are included in the overall points calculation only when Maths is one of the applicant's best six subjects following the addition of the bonus.

# IMPORTANT NOTES (SPECIFIC HEI / COURSES)

NCAD does not operate the Leaving Cert/CAO points scheme for programmes requiring a portfolio submission. Offers are made based on portfolio score to applicants who meet minimum academic entry requirements. To see the NCAD Portfolio Submission Guidelines see their website..

Applicants for undergraduate medicine courses: To be eligible to compete for entry to undergraduate medicine in 2024, applicants must...

1. Achieve a minimum of 480 points
  2. Meet the minimum entry requirements for each Medical School for which they have applied
  3. Complete the required admissions test (HPAT-Ireland) in 2024.
- Criteria 1 and 2 above must both be met in the same sitting of the Irish Leaving Certificate Examination, or equivalent. Pre 2024 Leaving Certificate results may be presented but the HPAT must be presented in the year of entry



# CAO OFFERS PROCESS

## **Transfer of Grades to CAO:**

All students' grades are transferred directly to the CAO. Following this the offers process begins and you will be notified if you have been offered a college course place. See 'Important CAO Dates' above for the provisional timetable of dates regarding offers.

## **Accepting an offer:**

If you wish to accept a CAO offer, there are some things you need to know:

- A Reply Date will be printed on Offer Notices. If you wish to accept an offer, you must do so by this Date.
- If you are unavailable, someone else may accept on your behalf, as long as they have the offer notice
- Offers will also be presented online at the CAO website, and you may accept an offer online
- If you receive an offer from both lists (Level 8 or the Level 6/7 list) you must choose between them i.e. you can only accept one offer, in any one round.
- If you don't want to accept the offer you've received, then simply do nothing, and wait for the next Round of offers.
- Can I accept more than one offer?: If you receive more than one offer, acceptance automatically cancels any previous acceptances. You can have only one current acceptance in the entire CAO system. This means that whichever course you accepted most recently is the course you have a place on. You have given up your place on another course by accepting the new offer.

## **Available places:**

After the initial CAO offers have been issued, CAO will post a list of courses that still have places available with no waiting list. If the course you were hoping to get into is listed, or if there is another course in the list that you are interested in, you can apply online. Visit the CAO website to view the list of available places. Check the site regularly to see if there are any new places available. You will need to meet the minimum requirements in order to get into the course.

## **DEFERRING OFFERS**

If you wish to defer an offer of a place you do not accept your offer. Instead, you must email the Admissions Office of the appropriate HEI immediately. You must give your name as it appears on your CAO application, quote your CAO application number and the course code of the offer you wish to defer, and set out the reason(s) for the request. Applicants must mark "DEFERRED ENTRY" clearly in the subject line of the email.

You can also check the website of the relevant HEI to see if they have a deferral policy available online that you can refer to. The email must arrive in the Admissions Office of the institution at least two days before the 'Reply Date' shown on the Offer Notice. The HEI will communicate their decision to you directly.

If the deferral is not granted you may then accept the offer for the current year providing you accept the offer by the 'Reply Date'. You must send all communications about deferrals to the appropriate Admissions Office and not to CAO.

## **HIGHER EDUCATION LINKS SCHEME (HELs) under QQI (Quality and Qualifications Ireland)**

The Higher Education Links Scheme (HELs) gives learners the opportunity to use their QQI Level 5 or 6 major award to apply, through the CAO, for a place in the first year of a higher education programme. Programmes leading to Level 5 and Level 6 Major Awards are available through providers who have programmes validated with QQI. Applications to participate in these Level 5 and 6 courses are made directly to the college's in question.

Linked awards, special requirements and available higher education programmes are published by the admissions office of the individual higher education institution and on [www.cao.ie](http://www.cao.ie).

For more information and guidance on HELs see [www.qqi.ie](http://www.qqi.ie)



# FURTHER EDUCATION AND TRAINING COURSES (LEVEL 5 / LEVEL 6)

Colleges of Further Education offer FET courses mostly accredited by QQI (Level 5 & Level 6). These courses are designed to act as a pathway to higher education or to prepare students for direct employment.



FET



CORK FET COLLEGES

**Cork College of FET - Morrison's Island Campus**  
Morrison's Quay, Cork City, T12 H685  
E: [morrisonsislandcampus.ie/contact](mailto:morrisonsislandcampus.ie/contact)  
Tel: 021-422 2100  
[www.morrisonsislandcampus.ie](http://www.morrisonsislandcampus.ie)

**Cork College of FET - Douglas Street Campus**  
Sawmill St., Cork City, T12 DW32  
E: [info@stjohnscollege.ie](mailto:info@stjohnscollege.ie)  
Tel: 021 439 1782 or 086 103 5343  
[www.citynorthcollege.ie](http://www.citynorthcollege.ie)

**Cork College of FET - Tramore Road Campus**  
Tramore Road, Cork City, T12 AC91.  
E: [info@csn.ie](mailto:info@csn.ie) Tel: 021-496 1020  
[www.csn.ie](http://www.csn.ie)

**Cork College of FET - Knocknaheeny Centre**  
Hollyhill, Cork City, T23 PW60  
E: [laura.dwyercanton@corketb.ie](mailto:laura.dwyercanton@corketb.ie)  
Tel: 021-439 7740 / 021-439 1782  
[www.citynorthcollege.ie](http://www.citynorthcollege.ie)



NORTH AND EAST CORK FET COLLEGES

**Carrignafoy Community College Cobh**  
Carrignafoy, Cobh, Co. Cork, P24 WR29  
E: [cobhcc@corketb.ie](mailto:cobhcc@corketb.ie)  
Tel: 021-481 1325  
[www.cobhcommunitycollege.com](http://www.cobhcommunitycollege.com)

**Cork College of FET - Mallow Campus**  
West End, Annabella, Mallow, Co. Cork, P51 P732  
E: [info@mallowcollege.ie](mailto:info@mallowcollege.ie) Tel: 022-43309  
[www.mallowcollege.ie](http://www.mallowcollege.ie)



WEST CORK FET COLLEGES

**Cork College of FET - Clonakilty Centre**  
Technical School, Western Road, Clonakilty, Co. Cork  
E: [brid.m.murphy@corketb.ie](mailto:brid.m.murphy@corketb.ie)  
Tel: 086 020 4681

**McEgan College of Further Education**  
Macroon, Co. Cork, P12 E291  
E: [info.office@mcegan.ie](mailto:info.office@mcegan.ie)  
Tel: 026-41076  
[www.mcegan.ie](http://www.mcegan.ie)

**Maria Immaculata Community College**  
Bantry Road, Dunmanway, Co. Cork, P47 AP82  
E: [miccinfo@corketb.ie](mailto:miccinfo@corketb.ie)  
Tel: 023-885 6030  
[www.micc.ie](http://www.micc.ie)

**Cork College of FET - Kinsale Campus**  
Bandon Road, Kinsale, Co. Cork, P17 NN67  
E: [info@kinsalecollege.ie](mailto:info@kinsalecollege.ie)  
Tel: 021-477 2275  
[www.kinsalecollege.ie](http://www.kinsalecollege.ie)

**Cork College of FET - West Cork Campuse**  
Rossa College, Skibbereen, P81 PN30  
E: [westcorkcampus@ccoc.ie](mailto:westcorkcampus@ccoc.ie)  
Tel: 028-21644  
[www.westcorkcampus.ie](http://www.westcorkcampus.ie)



PRIVATE THIRD LEVEL COLLEGES (CORK CITY)

**Griffith College - Cork Campus**  
Wellington Road, Montenotte, Cork, T23 DF3A  
E: [admissions.gcc@griffith.ie](mailto:admissions.gcc@griffith.ie)  
Tel: 021-450 7027  
[www.griffith.ie](http://www.griffith.ie)



# STUDYING IN NORTHERN IRELAND, UK AND EUROPE

## UCAS OFFERS – TARIFF POINTS



UCAS (University and Colleges Admissions Service) is the central applications body for full-time undergraduate courses in the UK (including Northern Ireland). If you have applied for a UK college place, UCAS will receive students' grades from the relevant awarding bodies and pass them on to their chosen colleges.

For students currently holding a conditional offer, these offers will become unconditional, as long as students meet offer conditions (usually related to grades). The UCAS system is based on a different points system known as **Tariff points**. The tables below outline the amount of points given for each leaving certificate grade at Higher and Ordinary level. For more information and details on UCAS and the Tariff Points system, you can visit [www.ucas.com](http://www.ucas.com)

## UCAS TARIFF POINTS

### Leaving Certificate - Higher Level

GRADE	POINTS
H1	36
H2	30
H3	24
H4	18
H5	12
H6	9
H7/H8	0

### Leaving Certificate - Ordinary Level

GRADE	POINTS
01	12
02	10
03	8
04	6
05	0
06	0
07/08	0

### TRACKING

#### Monitoring Your UCAS Application Progress

If you have applied for a UK course you can track the progress of your application by logging in to the UCAS 'Track System' by visiting

<https://www.ucas.com/undergraduate/after-you-apply/track-your-ucas-application>

## UK COLLEGE FEES:

England, Wales and Northern Ireland: HEI's in these UK areas can charge new students up to £9,250 sterling a year for undergraduate courses. You can apply for a tuition fee loan which you only have to repay after you have graduated. However, you are not entitled to maintenance support in the same way as home students. If you are an EU national who has been settled in the UK for over 3 years you will be classed as a home student and will be able to apply for financial support for living costs.

Scotland: Irish and EU students who start their first full-time degree course in Scotland in 2024-2025 will pay similar fees. In Scotland you can also apply for a tuition fee loan.

You may be eligible for a maintenance grant if you meet the criteria for the Irish Student Grant Scheme (see SUSI Grants Scheme info below) but this does not include funding for tuition fees. You may also claim tax relief on third-level fees. There is detailed information on the range of Irish grants and funds for students in further and higher education at [studentfinance.ie](http://studentfinance.ie) and the GOV.UK website has information on the financial supports available for EU students studying in the UK including Northern Ireland.

# MORE INFO ON TUITION FEES AND FUNDING FOR UK STUDY

**LOANS:** You can apply for a UK Tuition Fee loan, which you only have to repay after you have graduated and are earning above a certain level. For more information on these loans you can visit

<https://www.gov.uk/student-finance/eu-students>

**FEES & FUNDING OPTIONS:** You can find out more about tuition fees and funding available in your region by visiting [ucas.com/finance/finance-international-and-eu-students](https://ucas.com/finance/finance-international-and-eu-students).

## Student Finance Services (EU Students)

Tel: 0141 243 3570 (Mon-Fri 8am to 6pm)

Web: <https://www.gov.uk/student-finance/eu-students>

X: @SF\_England

Facebook: [facebook.com/SFEngland](https://facebook.com/SFEngland)

## UCAS Finance & Support

See also [www.ucas.com/ucas/undergraduate/finance-and-support](https://www.ucas.com/ucas/undergraduate/finance-and-support)

## The British Council, Ireland

[www.study-uk.britishcouncil.org](http://www.study-uk.britishcouncil.org)

E: [info@ie.britishcouncil.org](mailto:info@ie.britishcouncil.org)

Tel: +353 (0)1 676 4088 X: @ieBritish

Facebook: [facebook.com/BritishCouncilIreland](https://facebook.com/BritishCouncilIreland)

## The UK Council for International Student Affairs (UKCISA)

X: @azBritish / Facebook: [facebook.com/UKCISA/](https://facebook.com/UKCISA/)

Tel: +4420 7788 9214 (Mon-Fri 1pm to 4pm)

E: Mail: No mail service available

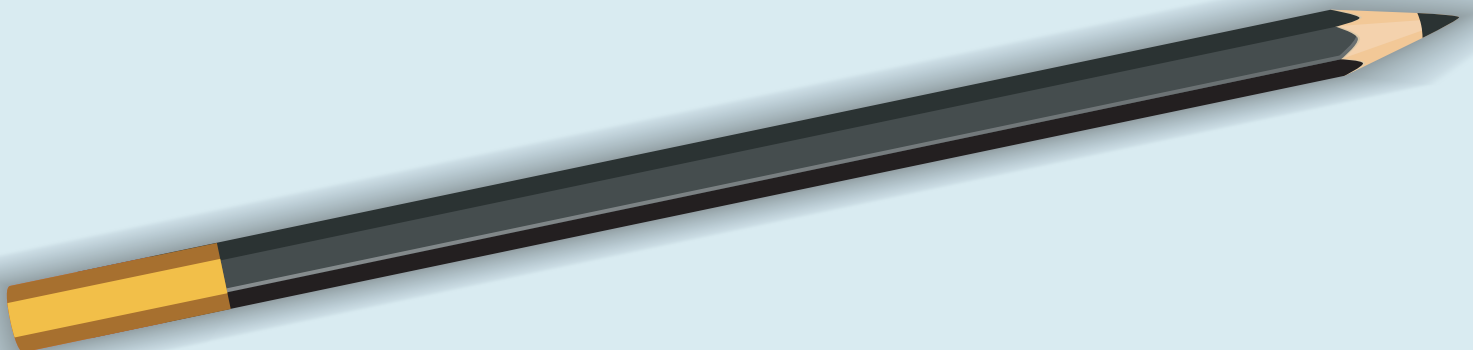
[www.ukcisa.org.uk](http://www.ukcisa.org.uk)

# SUSI GRANTS FOR THE UK

It is also possible to apply for a maintenance only grant in Ireland for approved undergraduate courses in the UK via Ireland's SUSI grant scheme. Visit [SUSI.ie](http://SUSI.ie) for more information on the application process as well as relevant dates and details.

# STUDYING IN EUROPE

The European Universities Central Application Support Service (EUNiCAS) provides information on College courses in Europe taught through English. Check the website for further information [www.eunicas.ie](http://www.eunicas.ie)



# ALTERNATIVES TO THE CAO/UCAS ROUTE

## APPRENTICESHIPS

An apprenticeship is the recognised way people are trained in a craft trade or profession. The main craft trades and professions have been designated by an organisation called SOLAS (solas.ie). Apprenticeships provide on-the-job training with an employer and generally last for 2 to 4 years, during which time you will spend different periods in off-the-job training. When you complete an apprenticeship programme, you will get a recognised qualification at Level 5 or above on the NFQ framework. You can start an apprenticeship from age 16 to 18 years depending on the apprenticeship programme. For more advice on apprenticeships:

Freephone 1800 794 487 from 12 noon to 6pm, Monday to Friday.

### **Craft Apprenticeships:**

A craft apprenticeship will usually last for 4 years, during which time you will spend 3 different periods in off-the-job training. Generally, the first training phase will take place in an Education and Training Board (ETB) Training Center, while the remaining off-the-job training phases will take place in an Institute of Technology or Technological University.

The skills you develop will be assessed through on-the-job competence testing as well as off-the-job module-based assessment and exams and, if you complete these assessments successfully, you will be awarded an Advanced Certificate – craft (level 6 on the National Framework of Qualifications).

Craft apprenticeships include:

- Carpentry
- Plumbing
- Motor Mechanics
- Electrical Apprenticeships.

### **New Apprenticeships:**

Apprenticeships introduced from 2016 on lead to an award between Levels 5-10 on the National Framework of Qualifications. Each apprenticeship programme can be for between 2 and 4 years.

There are a number of models of on-the-job and off-the-job training, as well as different models of delivery and different target groups. Industry-led groups, which work with education and training providers and other partners, oversee the development and roll-out of new apprenticeships.

New apprenticeships in ICT, finance and hospitality include:

- Software development
- Accounting Technician
- Commis chef

You can find information about new apprenticeships on [apprenticeship.ie](http://apprenticeship.ie).

# SOLAS

Solas offers Further Education and Training programmes. Part-time, full-time, day, evening and online courses. Programmes include apprenticeships, traineeships, skills to advance, eCollege and the European Globalisation Fund.

Visit [solas.ie](http://solas.ie) for more information

# THE DEFENCE FORCES

Recruitment competitions are held as required for the Defence Forces. Visit their website for more information - [military.ie](http://military.ie)

# AN GARDA SÍOCHÁNA

Applications should be made online to the **Public Appointments Service** through their website [www.publicjobs.ie](http://www.publicjobs.ie). It is recommended that applicants do not use a tablet / iPad or mobile device to apply. To apply, candidates must have a "User Account" on [www.publicjobs.ie](http://www.publicjobs.ie). If you have not already done so, you must register as a 'New User' to create your Profile (register a New Account). Once registered, you can set up a job alert for positions within An Garda Síochána.

# STATE TRAINING AGENCIES

## **Teagasc - The Agriculture and Food Development Authority**

Also see CAO for related courses through MTU & UCC.  
(Main Office): Teagasc, Oak Park, Carlow R93 XE12  
Tel: 059 917 0200 | Mail: [info@teagasc.ie](mailto:info@teagasc.ie)  
[www.teagasc.ie](http://www.teagasc.ie)

NOTE: Teagasc also has various regional offices nationwide

## **CETB (Cork Education & Training Board)**

A range of training and apprenticeships  
(Main Office): 21 Lavitt's Quay, Centre,  
Tel: 021 490 7100 | E: [info@corketb.ie](mailto:info@corketb.ie)  
[www.corketb.ie](http://www.corketb.ie)

## **National Maritime College of Ireland (NCMI)**

Applications for all degree programmes made  
Tel: 021 433 5600 | E: [reception@nmci.ie](mailto:reception@nmci.ie)  
[www.ncmi.ie](http://www.ncmi.ie)

## **Bord Iascaigh Mhara (BIM) - Irish Sea Fisheries Board.**

National Fisheries College, Castletownbere, Co. Cork  
Tel: 027 71230 | E: [della.osullivan@bim.ie](mailto:della.osullivan@bim.ie)  
[www.bim.ie](http://www.bim.ie)

# COLLEGES FOR REPEAT LEAVING CERTIFICATE

## **College of Commerce - Morrison's Island, Cork (Non-private)**

Tel: (021) 4223801 / Mail: [mdebarra@ccoc.ie](mailto:mdebarra@ccoc.ie) / Web: [corkcollegeofcommerce.ie](http://corkcollegeofcommerce.ie)

## **Bruce College - Audley House, St. Patrick's Hill, Cork.**

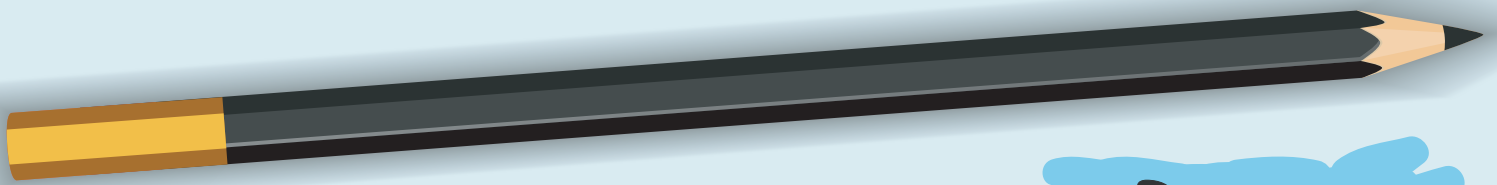
Tel: (021) 450 4122 / Mail: [susan@brucecollege.ie](mailto:susan@brucecollege.ie) / Web: [brucecollege.ie](http://brucecollege.ie)

## **Hewitt College - 24, Patrick's Hill, Cork.**

Tel: (021) 455 0430 / Mail: [admin@hewittcollege.net](mailto:admin@hewittcollege.net) / Web: [hewittcollege.ie](http://hewittcollege.ie)

## **Deane College - Fitzgerald House, 73-75 Grand Parade, Cork.**

Tel: (021) 427 4722 / Mail: [deanecollege@eircom.net](mailto:deanecollege@eircom.net) / Web: [deanecollege.ie](http://deanecollege.ie)



# GRANTS

## IMPORTANT! NOTE ON GRANT INFO:

The financial figures outlined in the following sections relating to 'Grant Rates' and 'Income Thresholds' pertain to those published for the academic year 2023 - 2024. As budget changes may affect grants for the academic year 2024 - 2025, the figures contained here should simply be used as an estimate and guide.

## SUSI – THE STUDENT GRANT SCHEME

Student Universal Support Ireland (SUSI) is Ireland's national awarding authority for all further and higher education grants. SUSI offers funding to eligible students, in approved full time third level courses at approved institutions.

**IMPORTANT NOTE:** Any student wishing to undertake a course of study at a private college (e.g. Griffith College, Dublin Business School etc) will not qualify for a grant as the list of approved institutions does not include private HEI's. Students attending these colleges will also be required to pay the relevant fees.

## ELIGIBILITY

**Residence & Nationality:** You must be an Irish, EU, EEA, UK or Swiss national or have a specific immigration status or leave to remain with permission from the Department of Justice. If you have been living in the EU, EEA, UK, or Swiss Federation but not in the Irish State for three of the last five years, you are a **tuition student**. This is any student that has been resident outside of Ireland but within the EU, EEA, the UK or Switzerland for three of the last five years. A tuition student, if they meet all eligibility criteria, is eligible for the **fee grant only** and will not receive a maintenance grant. Therefore, please note that a tuition student who wishes to pursue a PLC course would not be eligible for any grant funding from SUSI.

**Course:** You must be attending an approved course in an approved institution, and those who secure a course place will have met the academic requirements.

**Progression:** You must be progressing from your previous level of study.

**Income:** The means test for the **2024-2025** student grant is based on you or your family's gross income for the previous full tax year (**2023**). However, if you or your family have had a change of circumstances (which is likely to be permanent) since 31 **December 2023**, your changed circumstances will be taken into account. The person/s whose income is taken into consideration will depend on which of the following two categories they fall into (NOTE: Most secondary students fall into the first category - i.e. Dependent).

# APPLICANT CATEGORIES

**Dependent / Mature Dependent Student:** You will be assessed on your parents/legal guardians income and your own income (if any).

**Independent Student:** You will be assessed on your own income and that of your spouse / civil partner / cohabitant (if applicable)

## MAXIMUM PERIOD OF GRANT ASSISTANCE FOR UNDERGRAD COURSES:

Further & Higher Education	Level	Qualification	Max Period of Grant Funding
Further Ed	PLC Level 5	Certificate	- Max 3 years funding at PLC level
Further Ed	PLC Level 6	Advanced Certificate	
Higher Ed	UG Level 6	Higher Certificate	- Max 2 years funding at undergrad level 6 - Max 3 years funding at undergrad level 7 - Max 4 years funding in total at undergrad level 6 & 7 - Max 4 years funding at undergrad level 8 (except where normal duration of course exceeds 4 years)
Higher Ed	UG Level 7	Ordinary Bachelor Degree	
Higher Ed	UG Level 8	Honours Bachelor Degree	
Higher Ed	PG Level 8	Higher Diploma	- Max 4 years funding in total at postgrad level All previous attendance and attainment at postgraduate level are considered regardless of whether a grant was received previously or not.
Higher Ed	PG Level 9	Diploma	
Higher Ed	PG Level 9	Masters Degree	
Higher Ed	PG Level 10	PHD	

## STUDENT GRANT BREAKDOWN

### Part 1. Maintenance Grant:

This is a contribution towards day-to-day living costs and is paid directly to eligible students through nine monthly instalments over the course of the academic year. The total amount of grant payable will depend upon the level of a student's reckonable income. (see threshold breakdown below)

### Part 2. Fee Grant:

Fee grants pay tuition fees for students who do not qualify for the Free Fees Scheme (see below). Fee grants can also pay the Student Contribution and the cost of essential field trips.

Free Fees Scheme: Most undergraduate students attending publicly funded third-level courses do not have to pay tuition fees. Under the terms of the Free Fees Initiative, the Department of Further and Higher Education pays the fees to the colleges instead.

# QUALIFYING FOR THE FEE GRANT

If you qualify for the maintenance grant, you will most likely also get the fee grant. However, some people will only be eligible for a fee grant (this will depend on the outcome of the Means Test). The fees grant is also means tested and follows a lot of the same conditions as the maintenance grant.

# MAINTENANCE GRANT: ADJACENT AND NON-ADJACENT RATES

If you are eligible for a maintenance grant, it will be paid at either the adjacent rate or the non-adjacent rate. The adjacent rate is paid when your college is less than 30 km from your normal residence and the non-adjacent rate is paid when your college is 30 km or more from your normal residence.

# GRANT AMOUNT AWARDED

The total amount of the grant will depend on the level of a student's reckonable income. The 'Income Threshold' table below illustrates the different income thresholds (N.B: This table pertains to income thresholds published for the 2023-2024 academic year. These may change for the 2024-2025 academic year).

# SPECIAL RATE GRANT:

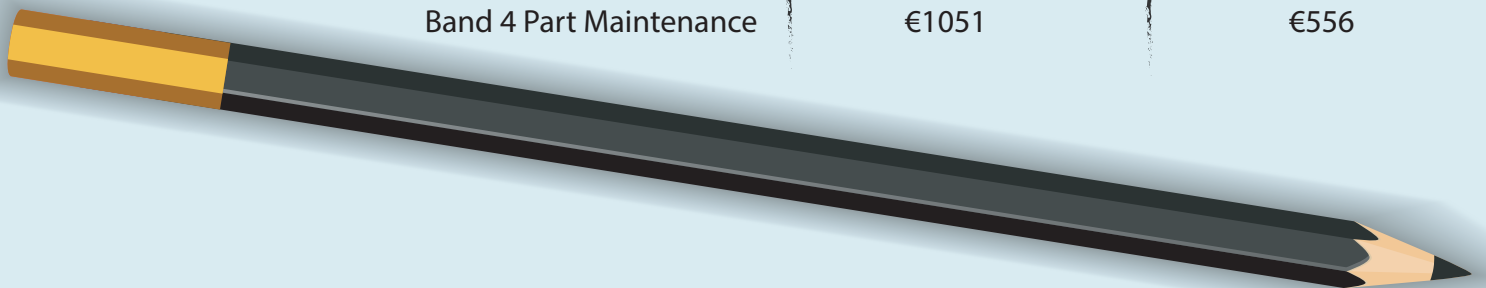
Disadvantaged students can qualify for a **special rate of maintenance grant**. To qualify, you must fulfil all the normal criteria for the grant and have a total reckonable income in the tax year January to **December 2023** of less than the relevant designated income threshold (see Income Thresholds table below), not including Qualified Child Increases and standard exclusions. This income must include a long term **Department of Social Protection** eligible payment. For a list of eligible Special Rate payments visit <https://susi.ie/special-rate-awards/>

# RATES OF MAINTENANCE GRANT 2023 – 2024

NOTE: These rates below may change for the 2024-2025 academic year).

Undergraduate & PLC Grant Rates (Maintenance Only: No Fees Payable)

Levels of Grant	Maintenance (Non-Adjacent)	Maintenance (Adjacent)
Special Rate	€6971	€2936
Band 1 Full Maintenance	€3677	€1613
Band 2 Part Maintenance	€2717	€1221
Band 3 Part Maintenance	€1887	€886
Band 4 Part Maintenance	€1051	€556



# INCOME THRESHOLDS 2023–2024

NOTE: These Income Thresholds outlined below may change for the 2024-2025 academic year).

Household income thresholds (for the purpose of means testing) are laid out in the table below and relate to Rates of Maintenance Grant (Adjacent or Non-Adjacent).

\*Family's Reckonable income must be under the listed amounts (Maintenance & Fee Grant)

RATE	Less than 4 Children	4 to 7 children	8 or more children	Increase per additional person in college
Special Rate	€25,000	€27,400	€29,702	€4,950
Band 1 (Full Maintenance)	€40,875	€44,810	€48,575	€4,950
Band 2 (Part Maintenance)	€41,970	€46,025	€49,890	€4,785
Band 3 (Part Maintenance)	€44,380	€48,670	€52,760	€4,785
Band 4 (Part Maintenance)	€46,790	€51,325	€55,630	€4,785

The following table outlines conditions relating to the Fee Grant (i.e. No Maintenance Grant) for household incomes under the the listed amounts:

RATE	Less than 4 Children	4 to 7 children	8 or more children	Increase per additional person in college
<b>No Maintenance FEES:</b> 50% Tuition or 100% Student Contribution	€50,840	€55,765	€60,455	€4,950
<b>No Maintenance FEES:</b> 50% Student Contribution	€62,000	€68,014	€73,727	€4,950
<b>No Maintenance</b> €500 Student Contribution	€100,000	€109,600	€118,806	€4,950

## SUSI APPLICATION PROCEDURE

The SUSI website will provide information of opening dates for grant applications relating to the 2024 - 2025 academic year. You can apply online at [susi.ie](https://www.susi.ie). We strongly advise that applications be made as soon as possible after the opening date is announced.

## SUSI ELIGIBILITY RECKONER / APPLICATION TRACKER

You can use the **Eligibility Reckoner** on SUSI website, for quick assessment of your eligibility for a grant. There is also an **Online Tracker** available to check the status of your application. For more detailed information on eligibility and the SUSI grant application process (including 'tips for applicants') visit [susi.ie](https://www.susi.ie).



# ACCOMMODATION

## STUDENT ACCOMMODATION

If you have gained a place, contact your college as soon as possible before the start of the academic year for advice and support in accommodation locally. Some college Students Unions provide lists of suitable/vacant accommodation. Also check the college website.

<a href="http://www.aitsu.ie">www.aitsu.ie</a>	Athlone IT	090 6468067
<a href="http://www.itcarlow.ie">www.itcarlow.ie</a>	IT Carlow	059 9175600
<a href="http://www.cit.ie">www.cit.ie</a>	CIT	021 4335750
<a href="http://www.ucc.ie">www.ucc.ie</a>	UCC	021 4818459
<a href="http://www.dcu.ie">www.dcu.ie</a>	DCU	01 7005736
<a href="http://www.dit.ie">www.dit.ie</a>	DIT	01 4023394
<a href="http://www.iadt.ie">www.iadt.ie</a>	Dun Laoghaire IADT	01 2394646
<a href="http://www.itb.ie">www.itb.ie</a>	IT Blanchardstown	01 8851592
<a href="http://www.it-tallaght.ie">www.it-tallaght.ie</a>	IT Tallaght	01 4042047
<a href="http://www.tcd.ie">www.tcd.ie</a>	Trinity College	01 896 1177
<a href="http://www.ucd.ie">www.ucd.ie</a>	UCD	01 7161031
<a href="http://www.dkit.ie">www.dkit.ie</a>	Dundalk IT	042 9370390
<a href="http://www.gmit.ie">www.gmit.ie</a>	Galway-Mayo IT	091 7423264
<a href="http://www.gmit.ie">www.gmit.ie</a>	GMIT Castebar	094 9043162
<a href="http://www.nuigalway.ie">www.nuigalway.ie</a>	NUI Galway	091 493999
<a href="http://www.lyit.ie">www.lyit.ie</a>	Letterkenny IT	074 9186000
<a href="http://www.lit.ie">www.lit.ie</a>	Limerick IT	061 293135
<a href="http://www.ul.ie">www.ul.ie</a>	UL	061 202331
<a href="http://www.nuim.ie">www.nuim.ie</a>	NUI Maynooth	01 7083322
<a href="http://www.itsligo.ie">www.itsligo.ie</a>	IT Sligo	071 9137369
<a href="http://www.ittralee.ie">www.ittralee.ie</a>	IT Tralee	066 7145600
<a href="http://www.wit.ie">www.wit.ie</a>	Waterford IT	051 306100

## OTHER USEFUL ACCOMMODATION WEBSITES INCLUDE:

[daft.ie](http://daft.ie) / [let.ie](http://let.ie) / [eazycork.com](http://eazycork.com) / [rent.ie](http://rent.ie) / [property.ie](http://property.ie)

## STUDENT SUPPORTS

There is a lot of help and support available to you when you start college - you just need to ask:

- **Admissions Officer:** Often your first point of contact. They advise on the administration of college life, such as deferring courses, changing courses etc.

- **Access Officer:** Assists students on various issues such as financial problems, education worries and facilities / resources for people with disabilities (some colleges have separate disability officers).

- **Student Services Officer:** Plans for students needs such as orientation for newcomers, counselling, mentoring etc.

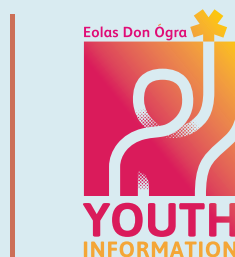
- **Student Union:** Represents students and advises on student issues.

NOTE: Contact info for all of the student supports above can be found on the relevant college websites.

# YMCA IRELAND'S ADVOCACY & YOUTH INFORMATION SERVICE

Our service connects young people, parents and those who work with young people with a professional Youth Information Officer who provides personalised information.

The service is a great way for you to get more information, learn about new opportunities and talk through your own situation with someone who can help.



**YIChat Service**      [www.ymca-ireland.net/question](http://www.ymca-ireland.net/question)

Monday-Friday 16:00 - 20:00 (except for public holidays)

or you can leave a message outside of those hours and receive a reply by email

**Cork YIC**

**YMCA, Innovation Space, 11/12 Marlboro Street, Cork**

Tel: 021 4270187

[john.russell@ymca-ireland.net](mailto:john.russell@ymca-ireland.net)

Opening Times: Wednesday - Friday 11:00 -13:00 & 14:00 - 17:00

**West Cork YIC**

Tel: 023 8844009

[tj@ymca-ireland.net](mailto:tj@ymca-ireland.net)

Just contact us to set up an appointment at a time that suits you!

**Youth Info Hub @ The Shack Youth Space, Larkin St., Deasy's Carpark, Clonakilty**

Opening Times: Monday 18:30 - 20:30

Contact Ronan at 086 103 6467 (Monday 18:30 - 20:30 / Saturday 09:00- 13:00)

Find out about the latest YMCA Ireland Youth Information publications & activities and Youth Advocacy opportunities at: [www.ymca-ireland.net/YMCAyouthinfo](http://www.ymca-ireland.net/YMCAyouthinfo)



An Roinn Leanáí, Comhionannais,  
Míchumais, Lánpháirtíochta agus Óige  
Department of Children, Equality,  
Disability, Integration and Youth



# Y M C A Y O U T H I N F O

WHILE EVERY EFFORT HAS BEEN MADE TO ENSURE THAT THE INFORMATION PROVIDED IN THIS DOCUMENT IS ACCURATE, THE YOUTH INFORMATION SERVICES CANNOT BE RESPONSIBLE FOR LIABILITY INCURRED OR LOSS SUFFERED AS A CONSEQUENCE OF RELYING ON THAT MATTER.